

◆ *Nisa Sultan*[®] ◆

TURKISH CUISINE



ESTABLISHED 2014



WELCOME TO NISA SULTAN PAKISTAN
NISA SULTAN PAKISTAN'A HOS GELDİNİZ

IT IS OUR ENDEAVOR TO PROVIDE YOU AUTHENTIC TURKISH FOOD THROUGH OUR CUISINE CONNOISSEURS WITH A UNIQUE AND MEMORABLE DINING EXPERIENCE THROUGH CAREFULLY SELECTED DISHES CONCEIVED WITH THE FUSION OF FLAVORS AND TEXTURE DRAWN FROM TURKIYE. THE FINEST LOCAL AND IMPORTED INGREDIENTS HAVE BEEN SOURCED AND COMBINED TO PRODUCE AN ELECTRIC CHOICE OF SUBLIME DISHES THAT SERVE TO SATISFY THE MOST DISCERNING PALATE OF TURKIYE. WE STRONGLY ENCOURAGE OUR GUEST TO FEEL FREE TO TALK TO US AND MAKE ANY SUGGESTION THEY BELIEVE COULD MAKE OUR SERVICES EVEN BETTER.

BEST REGARDS / SAYGILARIMLA

CEO-NISA SULTAN GLOBAL
NADIRA SOHAIL QURESHI



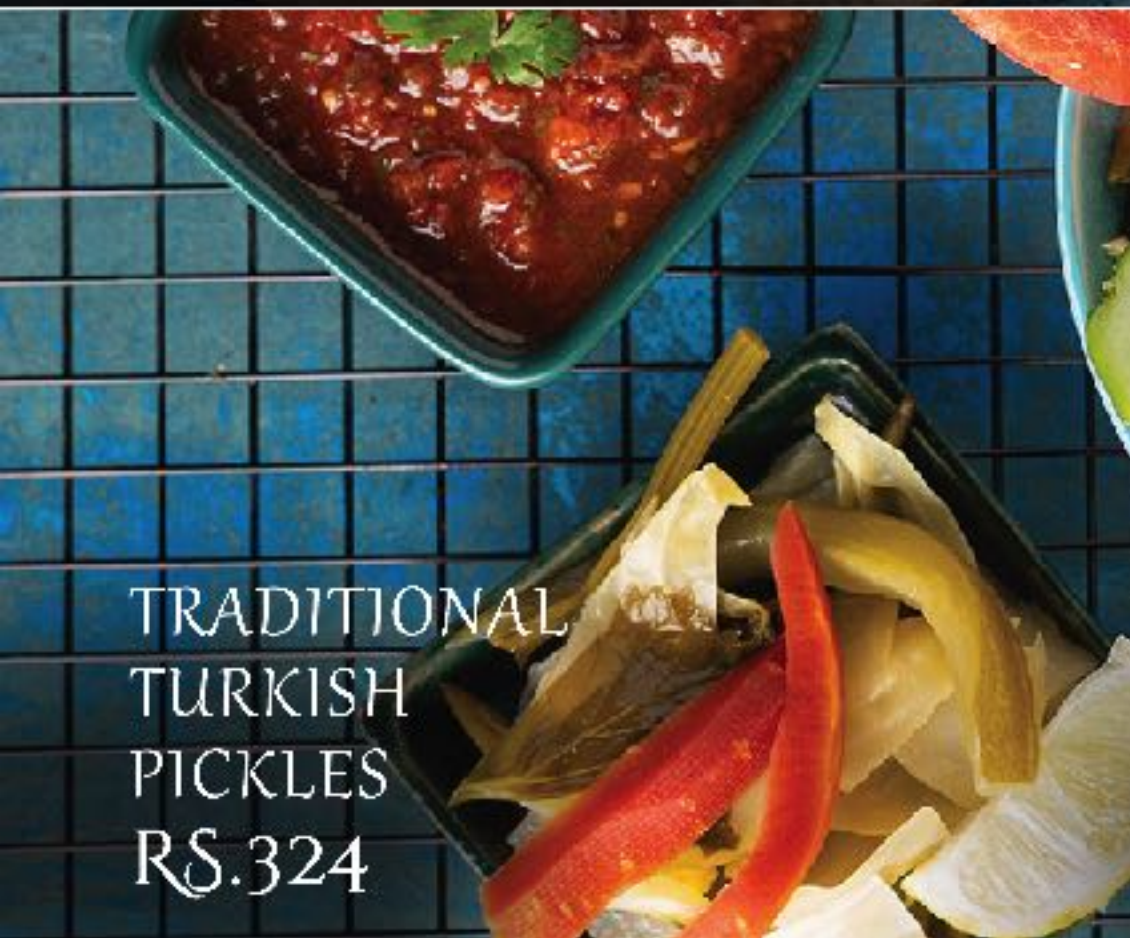
TURKISH MEZZE / APPETIZERS



HUMMUS
RS.624



EZME
RS.374



TRADITIONAL
TURKISH
PICKLES
RS.324



1 COBAN SALAD
RS.479 *New*

2 OTTOMAN DONER
SALAD RS.749



MIX MEZZE PLATTER
RS. 1689

New

DONER & ROLLS

1 DONER PLATTER (SERVED WITH LAVASH BREAD)
LAMB: RS.2169 CHX: RS.1583 MIX: RS.1930

2 DONER PLATTER (SERVED WITH RICE)
LAMB: RS.2349 CHX: RS.1776 MIX: RS.2137

3 DONER ON CRISPY CHIPS
LAMB: RS.2219 CHX: RS.1646 MIX: RS.2007



7 PITA DONER
LAMB: RS.1538 CHX: RS.1224 MIX: RS.1321

2 PITA DONER WITH PICKLES
LAMB: RS.1552 CHX: RS.1236 MIX: RS.1429



1 ADANA BBQ ROLL

LAMB: RS.1372 CHX: RS. 1016 MIX: RS.1260

2 SHISH BBQ ROLL

LAMB: RS.1234 CHX: RS.875 MIX: RS.1124

1 DONER ROLL

LAMB: RS.1299 CHX: RS.911 MIX: RS.1031

2 DONER ROLL WITH PICKLES

LAMB: RS.1322 CHX: RS.986 MIX: RS.1143

3 DONER ROLL WITH FRIES

LAMB: RS.1268 CHX: RS.961 MIX: RS.1065





DONER SANDWICH

LAMB: RS.1259 CHX: RS.749 MIX: RS.1011

New

TURKISH BBQ

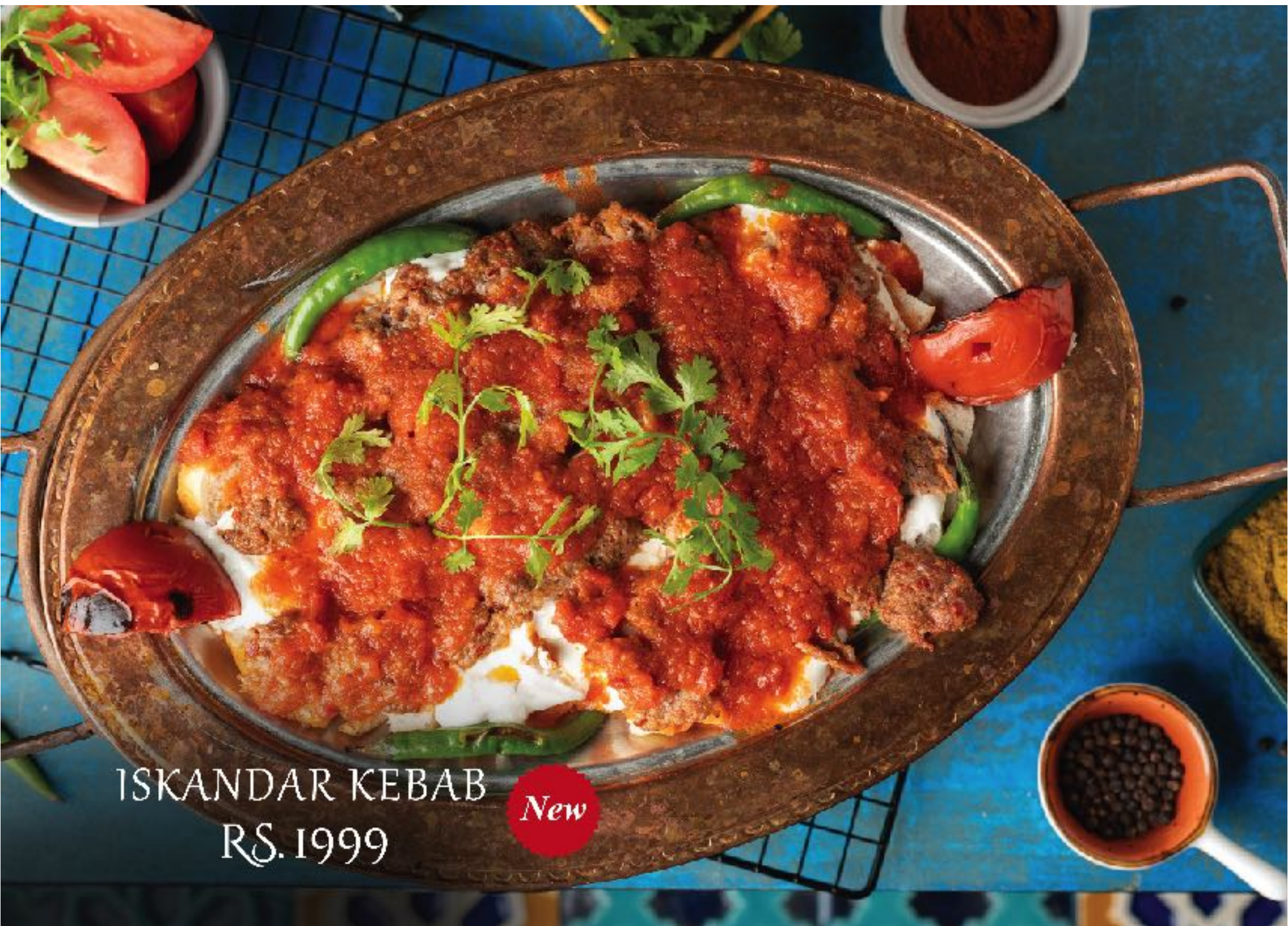


NS FAMILY PLATTER

LAMB: RS.13,677 CHX: RS.9,401 MIX: RS.11,901

New





ISKANDAR KEBAB
RS. 1999

New



LAMB CHOP SHISH
RS.2496



BAKLAVA KEBAB
LAMB: RS.2271 CHX: RS.1745



SHASHLIK FISH BBQ (SEASONAL)
RS.1624



TESTI KEBAB
(SERVED WITH TURKISH RICE)

New
LAMB: RS.2631

1 BBQ PLATTER FOR 1

LAMB: RS.2599 CHX: RS.1799 MIX: RS.2131

2 BBQ PLATTER FOR 2

LAMB: RS.4,809 CHX: RS.3,374 MIX: RS.4159

3 BBQ PLATTER FOR 4

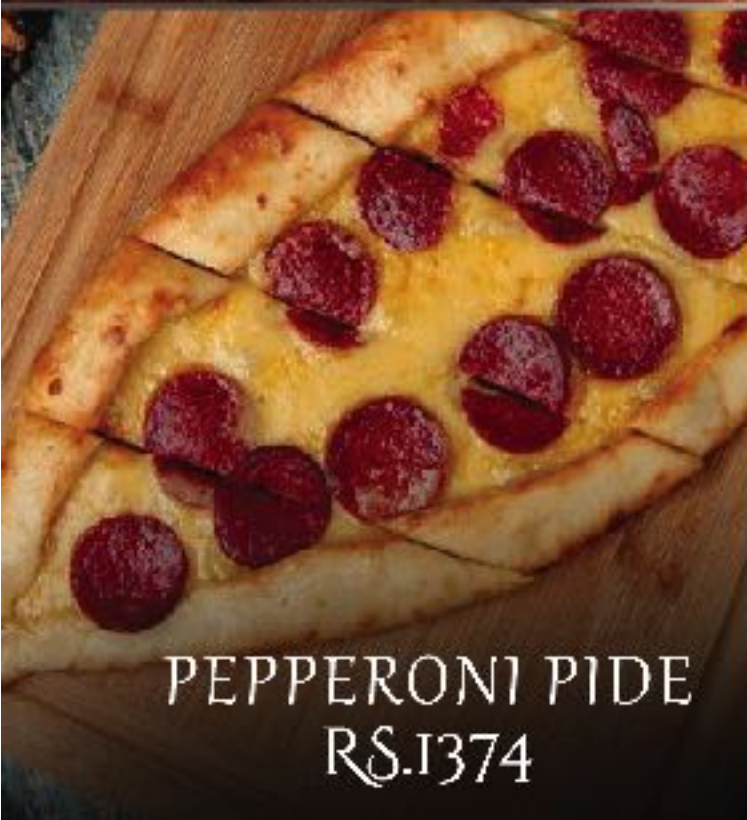
LAMB: RS.8,709 CHX: RS.6,249 MIX: RS.7,799



TURKISH PIDE / PIZZA



LAHMACUN
RS.711



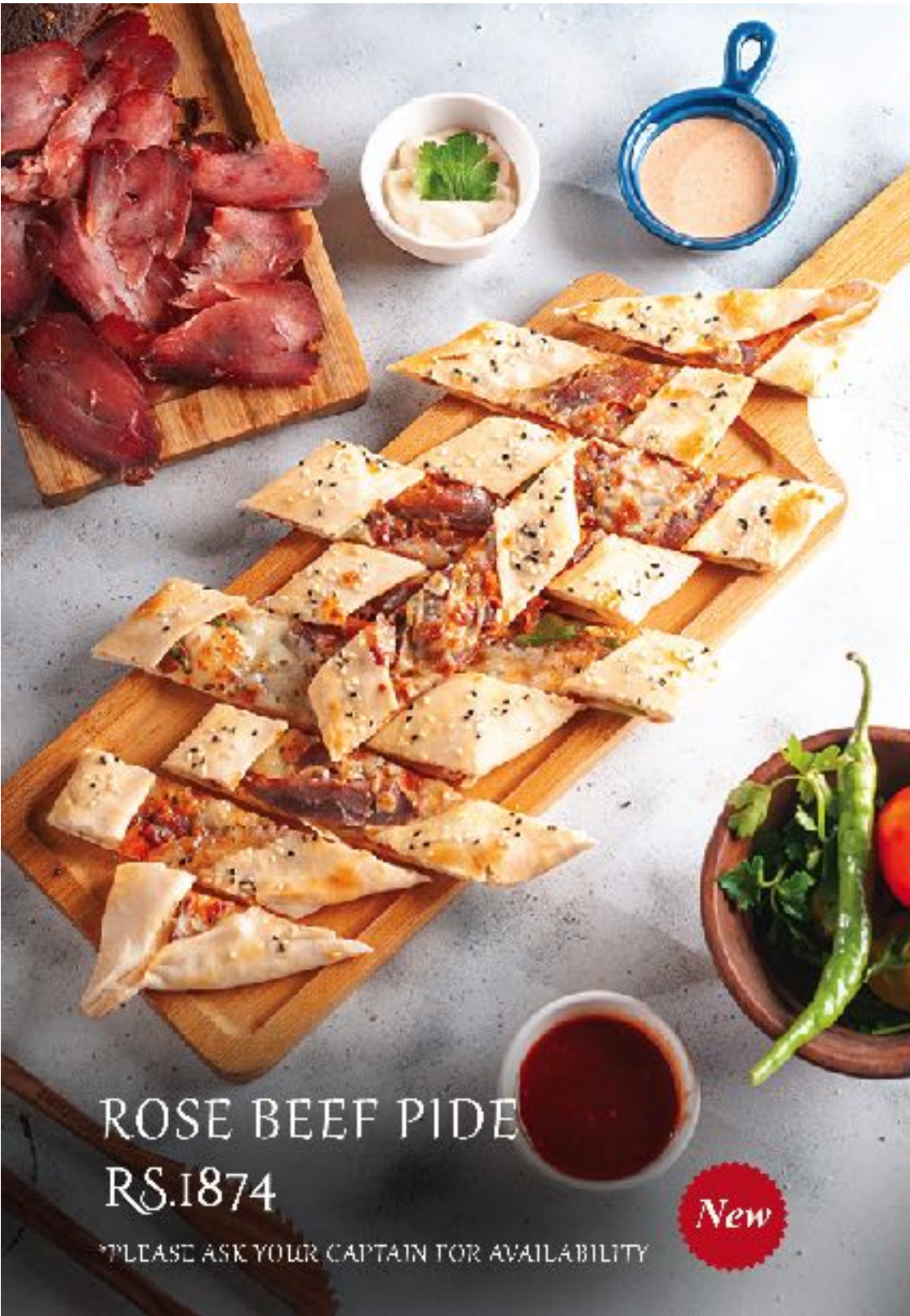
PEPPERONI PIDE
RS.1374



CHEESE PIDE
RS.1249



FULL MIXED PIDE
RS.1749



ROSE BEEF PIDE
RS.1874

*PLEASE ASK YOUR CAPTAIN FOR AVAILABILITY

New



CHOPPED MEAT PIDE
RS.1624

CHICKEN PIDE
RS.1439

DESSERTS



TURKISH KUNEFE RS.1124

*NOW AVAILABLE IN FAMILY SIZE FOR 4 TO 6 PERSONS RS.1699

TURKISH BAKLAVA
RS.1124

New

ADD-ONS

BALLOON BREAD	155
LAVASH	92
NAAN BREAD	131
RICE	179
FRIES	359
CHEESE	143
EXTRA MEAT	486
EXTRA CHICKEN	359
EXTRA SAUCES (3DIPS)	191

HOT DRINKS

COFFEE HOT CHOCOLATE 714
(ONLY IN WINTERS)

GREEN JASMINE TEA 143



TURKISH TEA
RS.239

COLD DRINKS

OTTOMAN SIGNATURE SHARBAT 300

AYRAN 235

SEASONAL FRESH JUICES 570
ASK OUR CAPTAIN FOR TODAY'S SELECTION

MINT MARGARITA 479

PINA COLADA 570

CLASSIC LEMON & MINT MOJITO 420

FRESH LIME 7UP 194

COLD COFFEE 599

PEPSI, 7UP, MARINDA 164

DIET PEPSI, DIET 7UP 186

MOUNTAIN DEW 175

WATER (1.5 LTR) 219

WATER (500 ML) 87

CEO'S MESSAGE

NISA FAMILY HAS BROUGHT ITS HERITAGE, THE OTTOMAN CUISINE, AUTHENTICITY AND CREDIBILITY TO PAKISTANI MARKET WITH AN AIM TO DELIVER AUTHENTIC TURKISH DELICACIES FOR ITS VALUED PAKISTANI BROTHERS & SISTERS. AS A CEO OF THE COMPANY MY AIM IS TO BECOME A WORLD CLASS COMPANY, OFFERING HEALTHY & AUTHENTIC TURKISH CUISINE THAT BEST SATISFIES OUR GUESTS THROUGH MY HOSPITALITY QUALIFIED MANAGEMENT. WE STRONGLY BELIEVE TO PROVIDE AN ENVIRONMENT OF BEST MANAGEMENT PRACTICES, HUMAN RESOURCE DEVELOPMENT AND MAXIMIZE VALUE FOR ITS BUSINESS ASSOCIATES WITH AN AIM TO CONTRIBUTE FOR THE SUCCESS OF PAKISTANI ECONOMY.

Regards

NADIRA SOHAIL QURESHI



Gulberg Branch

(042) 35785670 | 03090006333

DHA Branch

(042) 37192011 | 04237192311 | 0324 4346104

Lake City Mall Branch

(042) 35139766 | 0306 0111771

Johar Town Branch

(042) 32290134 | 0308 7317070

Mall of Gujranwala Branch

03111444579

D1 A Phase 6 Fairways Commercial Branch

03011835555

The Management is not responsible for any articles lost in the restaurant, Outside food and drinks are strictly prohibited in the restaurant, please take you belongings with you, rights of admission reserved, Parking at your own risk, all applicable government taxes shall be added to your bill or as per the current government laws.

- The Management